

Explore the family of FDA compliant solutions from ARO® - the global leader in straightforward, reliable fluid products.

With a variety of products to meet the needs of the food and beverage, cosmetic and pharmaceutical industries, FDA compliant air operated double diaphragm pumps from ARO provide you ease of maintenance and industry leading total cost of ownership.

- ▶ EXPert Series pump design
 - Industry leading total cost of ownership
 - 20% - 30% greater flow rates than competitive pumps
 - Proprietary diaphragm design eliminates leaks, reduces material waste, and improves service life up to 4x greater than competitive pumps
- ▶ Constructed of FDA compliant materials
 - Sanitary Diaphragm (SD) series features 316L stainless steel construction and exclusive 316L ball valve for high temperature operation
- ▶ Choose Quick knock down (QKD) or bolted construction depending on your application



Throughout the past eight decades, ARO fluid management products have made businesses more competitive, cost-efficient and performance driven.

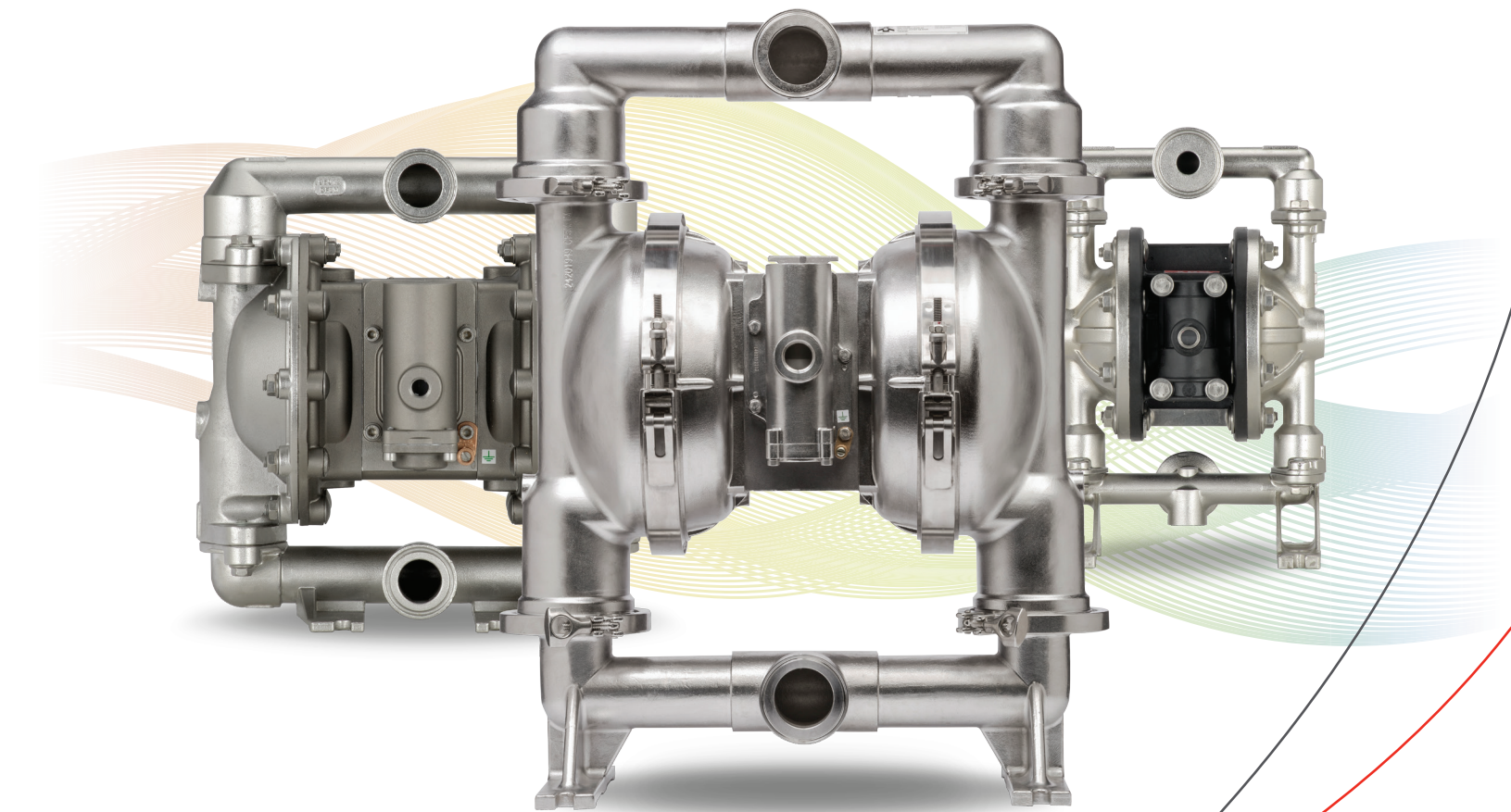
Contact us today with any of your fluid needs.

- ▶ www.AROzone.com
- ▶ (800) 495-0276
- ▶ arohotline@irco.com

ARO®

FDA COMPLIANT SOLUTIONS

AIR OPERATED DOUBLE DIAPHRAGM PUMPS



Distributed by:

www.AROzone.com arohotline@irco.com youtube.com/aropumps (800) 495-0276

ARO®

ARO® is a brand of Ingersoll Rand. Ingersoll Rand (NYSE:IR) advances the quality of life by creating comfortable, sustainable and efficient environments. Our people and our family of brands—including Club Car®, Ingersoll Rand®, Thermo King® and Trane®—work together to enhance the quality and comfort of air in homes and buildings; transport and protect food and perishables; and increase industrial productivity and efficiency. We are a \$12 billion global business committed to a world of sustainable progress and enduring results.



Our new SD line features the Quick knock down (QKD) compression clamp system to facilitate easier cleaning, service and maintenance, which promotes reliability and long product life.

EXPERT SERIES (EXP) PUMP DESIGN

- Industry leading total cost of operation, better flow rates and higher reliability
- As an expansion of the EXP Series of dual diaphragm pumps, ARO® now offers plant managers and maintenance engineers a reliable choice for sanitary applications.

COMPRESSION CLAMP BAND DESIGN

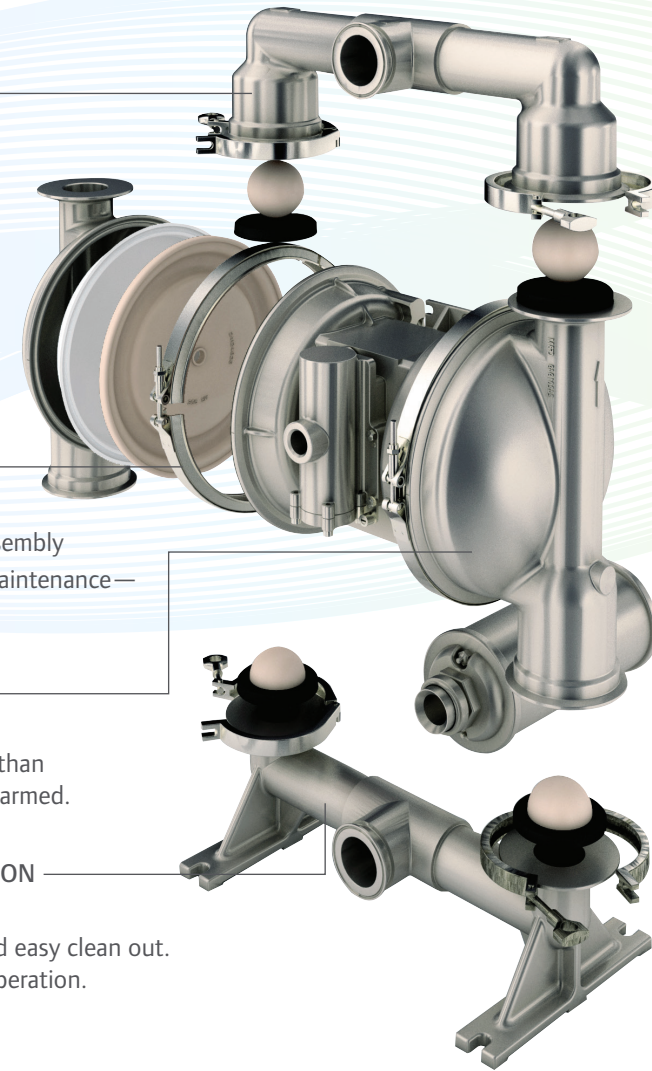
- Faster cleaning, service and maintenance
- Quick knock down (QKD) design facilitates rapid disassembly (and re-assembly) of components for inspection and maintenance—in place or out of place—and right back into service.

FLOW-RATE OPTIMIZED

- Better overall performance, low material shear
- ARO EXP Series design yields 20-30% better flow rate than competitors and ensures the material is transferred unharmed.

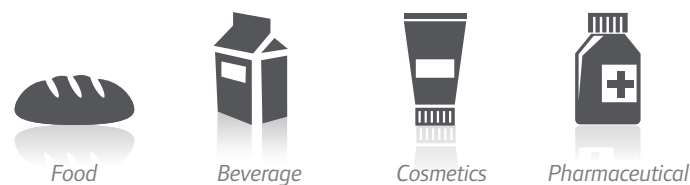
ELECTROPOLISH STAINLESS-STEEL 316L CONSTRUCTION

- FDA compliance and high temperature capability
- FDA compliant materials help ensure product purity and easy clean out. Exclusive 316L ball valve permits higher temperature operation.



Markets and Applications

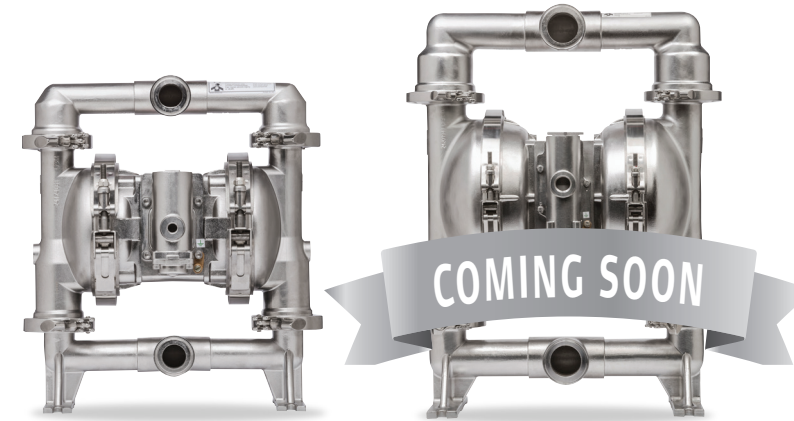
- ARO FDA compliant pumps are the reliable and efficient solution for high-volume transfer and dispensing applications.



SD Series Diaphragm Pumps

Our factory-installed options let you customize your ARO Sanitary pump to your specific application needs for cost-effective, factory control and worry-free integration. Quick knock down (QKD) design allows for quick inspection and maintenance—and then right back into service.

Additional technical information can found at AROzone.com or contact technical support at arohotline@irco.com



Operating Data	SD10S-CSS-SXX-A 1" Pump	SD20S-CSS-SXX-A 2" Pump
Startup Pressure PSI (bar)	25 (1.723)	25 (1.723)
Dry suction lift ft. H2O (m)	16.49 (5.02)	18.25 (5.56)
Wet suction lift ft. H2O (m)	31.4 (9.57)	31.4 ()
Flow Rate GPM (lpm)	54 (204.4)	192.7 (729.4)
Displacement per/cycle GPM @ 100 PSI (lpm)	0.258 (.976)	1.466 (5.54)
Max. Solids Passage in. (mm)	0.125 (3.175)	0.25 (6.35)

Service Kits for SD Series Pumps

	SD10S 1" Pump	SD20S 2" Pump
Fluid Kit (Santoprene)	637493-MM	637494-MM
Fluid Kit (PTFE)	637493-TT	637494-TT
Air Kit (FDA)	637495	637497
FDA Kit (Valve Block)	637496	637498

SD Series Pumps Ordering

Position	1	2	3	4	5	6	7	8	9	10			
Example:	SD	10	S	-	C	S	S	-	S	M	M	-	A

Series

SD Sanitary Pump

Port Size

10 1" Port
20 2" Port

Center Section Material

S 316 Stainless Steel

Connection

C Compression Clamp

Wetted Parts

S 316L Stainless Steel

Clamps/Hardware

S 304 Stainless Steel

Seat Material

S 316L Stainless Steel

Ball Material

M Medical Grade Santoprene
T PTFE

Diaphragm Material

M Medical Grade Santoprene
T PTFE/Santoprene

Revision

A First

PM Series Diaphragm Pumps

Our PM Series of diaphragm pumps are ideal for applications requiring quick-disconnect fluid connections. Constructed of FDA accepted materials, they feature electro-polished 316 stainless steel fluid section and bolted construction with all stainless steel hardware.

Additional technical information can found at AROzone.com or contact technical support at arohotline@irco.com



Operating Data	PM05X 1/2" Pump	PM10X 1" Pump	PM15X 1-1/2" Pump	PM20X 2" Pump	PM30X 3" Pump
Flow Rate GPM (lpm)	12.0 (45.4)	52.2 (197.6)	123 (465.6)	172 (651)	275 (1041)
Displacement per Cycle GPM (lpm)	0.040 (.15)	.232 (.88)	.617 (2.34)	1.4 (5.3)	2.8 (10.6)
Air Inlet (Female)	1/4 - 18 N.P.T.	1/4 - 18 N.P.T.	1/2 - 14 N.P.T.	3/4 - 14 N.P.T.F.-1	3/4 - 14 N.P.T.
Fluid Inlet / Outlet	1-1/2" Quick Disconnect Connections	1-1/2" Quick Disconnect Connections	2" Quick Disconnect Connections	2-1/2" Quick Disconnect Connections	3" Quick Disconnect Connections
Max. Operating Pressure PSI (bar)	100 (6.9)	120 (8.3)	120 (8.3)	120 (8.3)	120 (8.3)

Service Kits for PM Series Pumps

	PM05 1/2" Pump	PM10 1" Pump	PM15 1-1/2" Pump	PM20 2" Pump	PM30 3" Pump
Fluid Kit	637427-XX	637401-XX	637375-XX	637309-XX	637303-XX
Air Kit	637428	637397	637389	637421	637421

PM Series Pumps Ordering

Position	1	2	3	4	5	6	7	8	9			
Example:	PMXX	X	-	C	S	S	-	X	X	X	-	X02

Series/Port Size

PM05 1/2" Port
PM10 1" Port
PM15 1-1/2" Port
PM20 2" Port
PM30 3" Port

Center Section Material

A Aluminum
R Polypropylene
S Stainless Steel

Connection

C Compression Clamp

Wetted Parts

S Stainless Steel

Hardware

S Stainless Steel

Seat Material

A Santoprene
S Stainless Steel

Ball Material

A Santoprene
T PTFE

Diaphragm Material

A Santoprene
M Medical Grade Santoprene
T PTFE/Santoprene

A02 1", 1-1/2" Ported Pumps
B02 1/2", 2" Ported Pumps
C02 3" Ported Pumps