



### ADVANTAGES

- **Accidentally dry run capability** with carbon impeller bearing
- Energy saving

### FEATURES

- Seal less magnetic drive coupling
- Tmax exercise: PP 80°C - PVDF 98°C
- Connections:
  - socket union for rigid piping connection with PP, PVC, PVDF union ends choice
  - hose barb for hose connetcions
  - flanged

### APPLICATION FIELDS

- Acid and alkaline soutions with minimal solid suspended particles
- Electroplating, Chemical and PCB industry

### SPECIFICATIONS

	Flow Rate max (l/min.)	Head max (m)	Motor (kw)	IN/OUT D (mm)	T max (°C)	Weight* (kg)
50 Hz	520	28	2,20	63 x 50	PP: 80	PP: 28,00
60 Hz	520	28	2,20	63 x 50	PVDF: 98	PVDF: 30,00

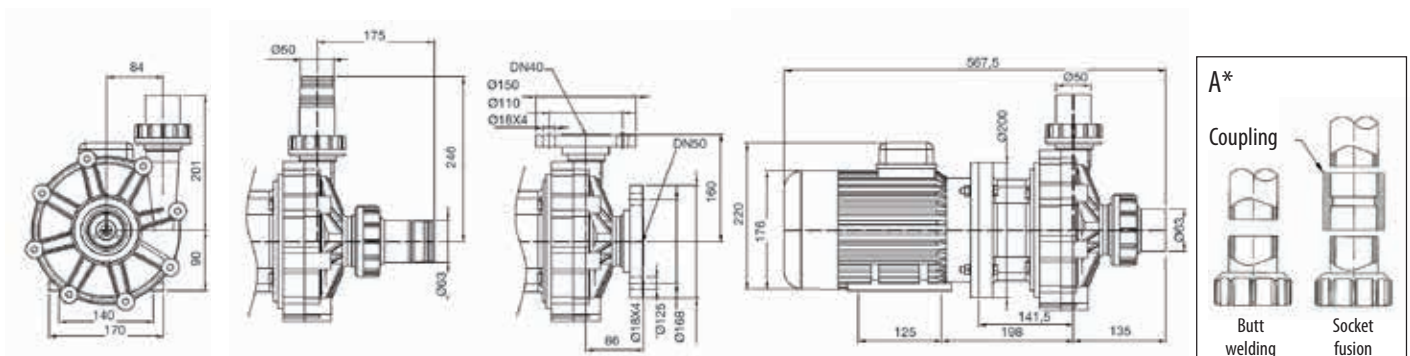
\* It depends on the motor



CONNECTION B  
for flexibles hoses

CONNECTION C  
flanged

CONNECTION A\*  
for rigid piping



⚠ It changes according with motor supplier

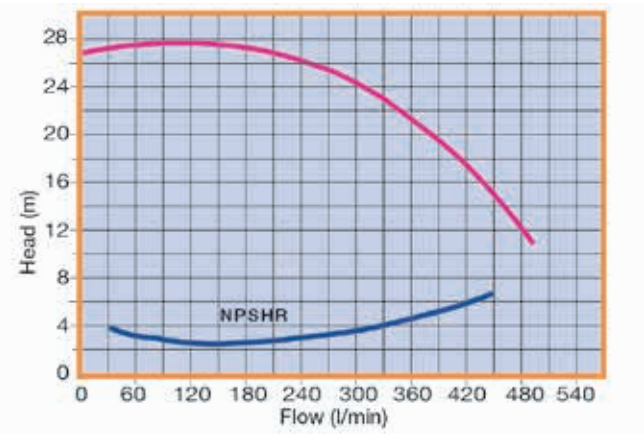
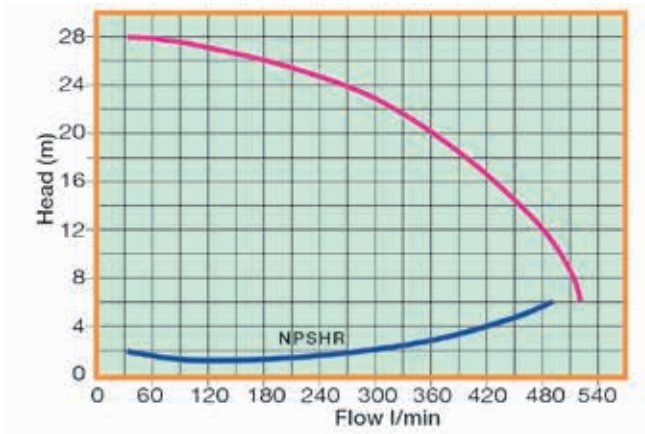
### PUMP IDENTIFICATION

Model	Pump body	Impeller	Shaft	Impeller bearing	O-Ring	Connections	Motor / rpm
EVT 30	P = PP F = PVDF	P = PP F = PVDF	C = Ceramic S = SIC	T = PTFE G = Carbon C = Ceramic	E = EPDM V = Viton	B = Socket union F = Flanged P = Hosebarb	A = 50 Hz / 2800 B = 60 Hz / 3400
<b>EVT 30</b>	<b>P</b>	<b>P</b>	<b>C</b>	<b>G</b>	<b>E</b>	<b>B</b>	<b>A</b>

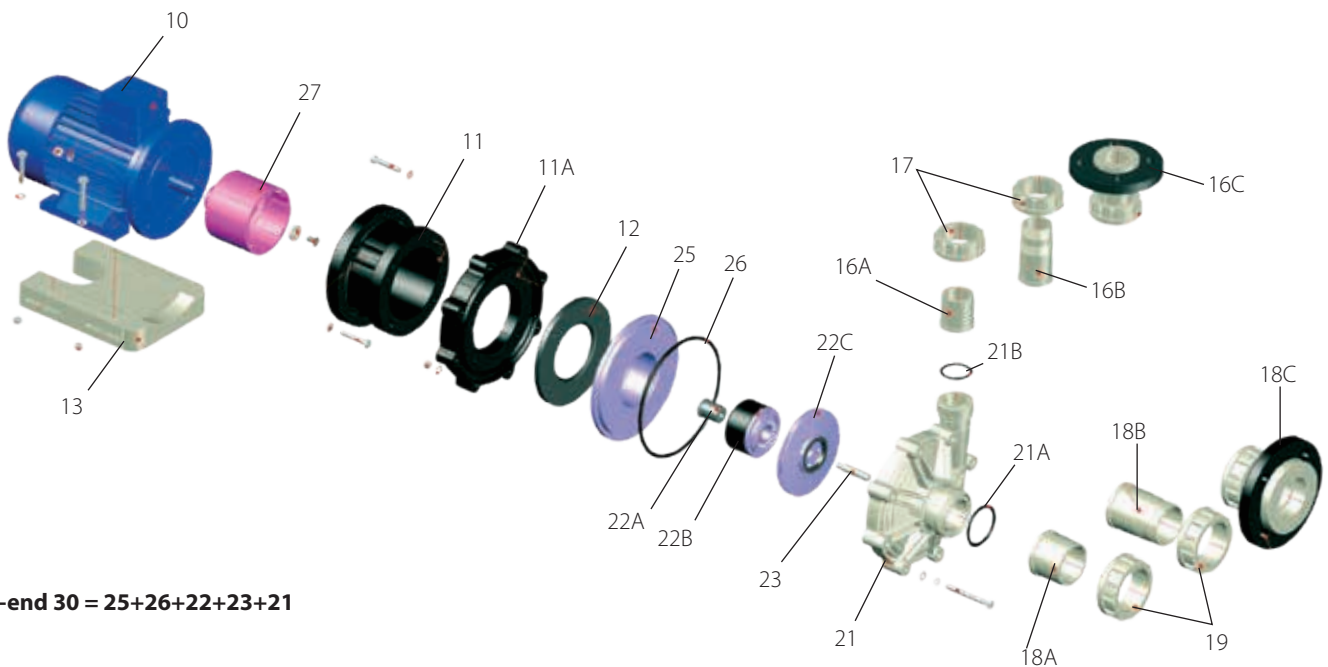
EVT - Pumps have dry run accidentally capability when equipped with carbon impeller bearing

Performance Curve 50 Hz - Rpm 2800

Performance Curve 60 Hz - Rpm 3400



Curves refer to water T = 20°C



**Wet-end 30 = 25+26+22+23+21**

- |                            |                          |                        |
|----------------------------|--------------------------|------------------------|
| 10 Motor                   | 17 Discharge nut         | 22 Impeller assembly   |
| 11 Bracket                 | 18A Rigid piping suction | 22A Impeller bearing   |
| 11A Flange Bracket         | 18B Suction hosebarb     | 22B Impeller magnet    |
| 12 Centering ring          | 18C Suction flange       | 22C impeller           |
| 13 Base plate              | 19 Suction nut           | 23 Shaft               |
| 16A Rigid piping discharge | 21 Pump housing          | 25 Rear casing         |
| 16B Discharge hosebarb     | 21A Suction O-Ring       | 26 Pump housing O-Ring |
| 16C Discharge flange       | 21B Discharge O-Ring     | 27 Drive magnet        |

LAFONTE.EU may modify data any time, without notice, in order to get product enhancement