

SERFILCO®
INTERNATIONAL

SERIES 'S' SELF-PRIMING CENTRIFUGAL PUMPS

BULLETIN

P630B-INT

July 2010



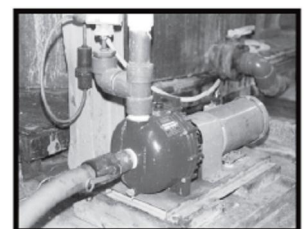
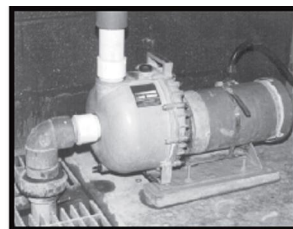
TRANSFER AND RECIRCULATION OF:

*CHEMICAL SOLUTIONS
WASTE TREATMENT
ACIDS / INDUSTRIAL LIQUIDS*

- CLOSE COUPLED
- OPEN IMPELLER
- PUMPS IN POLYESTER,
POLYPROPYLENE, OR RYTON
- NON-METALLIC SEAL
(OPTIONAL)
- MAX FLOW 50 M³/H
- MAX PRESSURE 25 M
- SUCTION LIFT 8 M
- CHECK VALVE – BUILT IN
- GASOLINE ENGINE OPTIONAL
- CONNECTIONS: 1½", 2" OR 3"
- BSP connections available with
Polyester Models

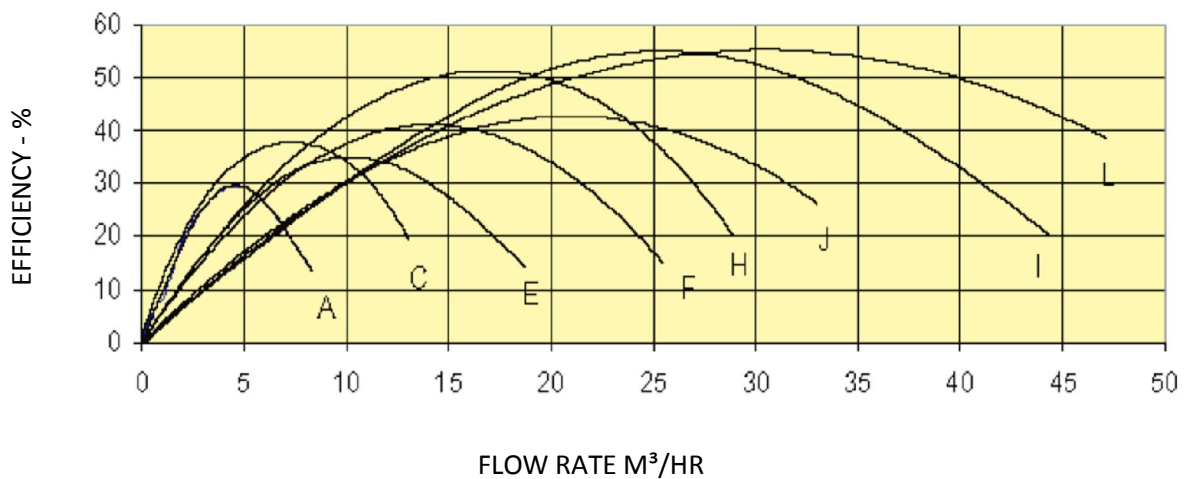
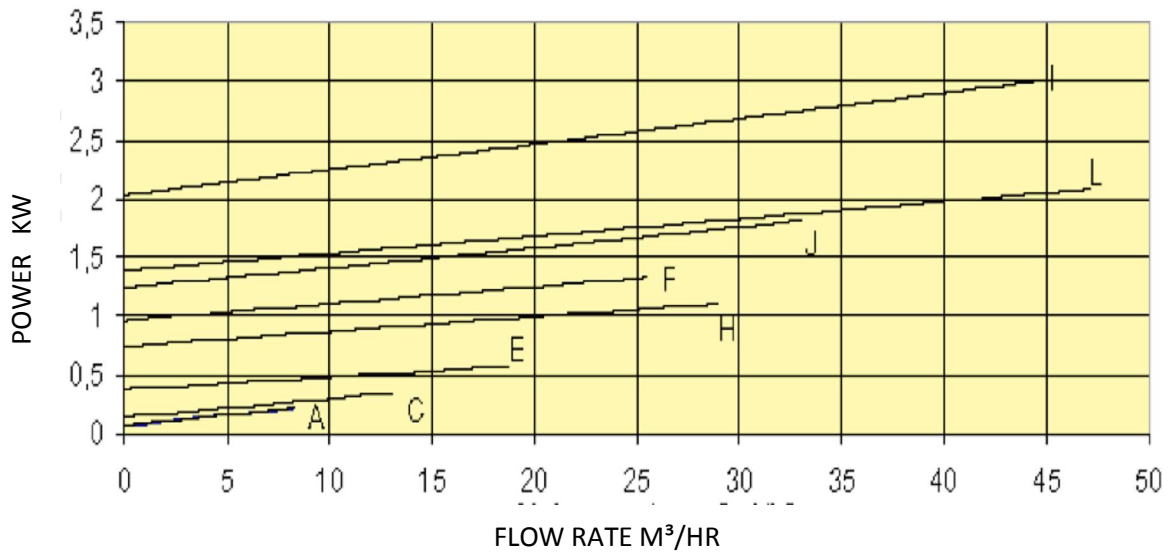
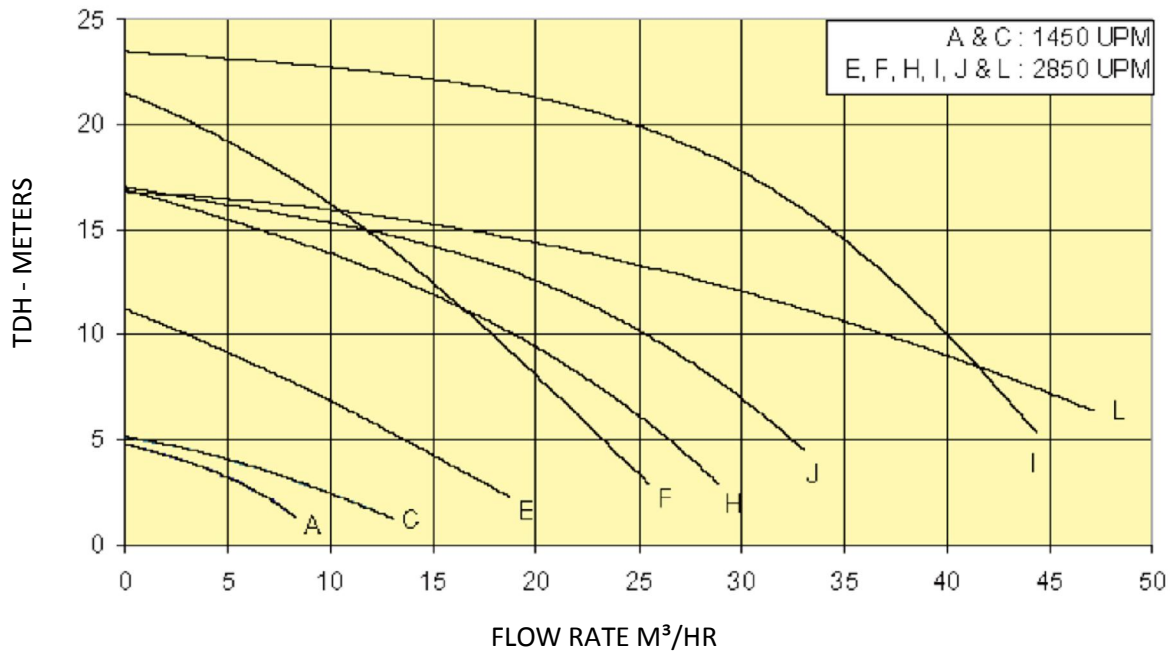
The Series 'S' Self-Priming Centrifugal Pump is a chemically resistant pump for general service on water, salt water, mild acids and bases. It is offered in a choice of glass reinforced polyester, polypropylene or Ryton construction to provide a maximum range of chemical resistance. It is available with a choice of elastomers and 316 stainless steel internal hardware or with completely non-metallic solution contact. The pump comes standard with 304 stainless external hardware.

All pumps include a built in check valve and feature a self-cleaning double volute which allows the Series 'S' pump to self prime and lift to 8 M. The self priming capability and chemical resistance make this an ideal chemical transfer, waste treatment, and emergency / backup pump.





SERIES ISD Technical Data





SERIES ISE Ordering Information and Dimensions

STANDARD MODELS (POLYESTER) with BSP

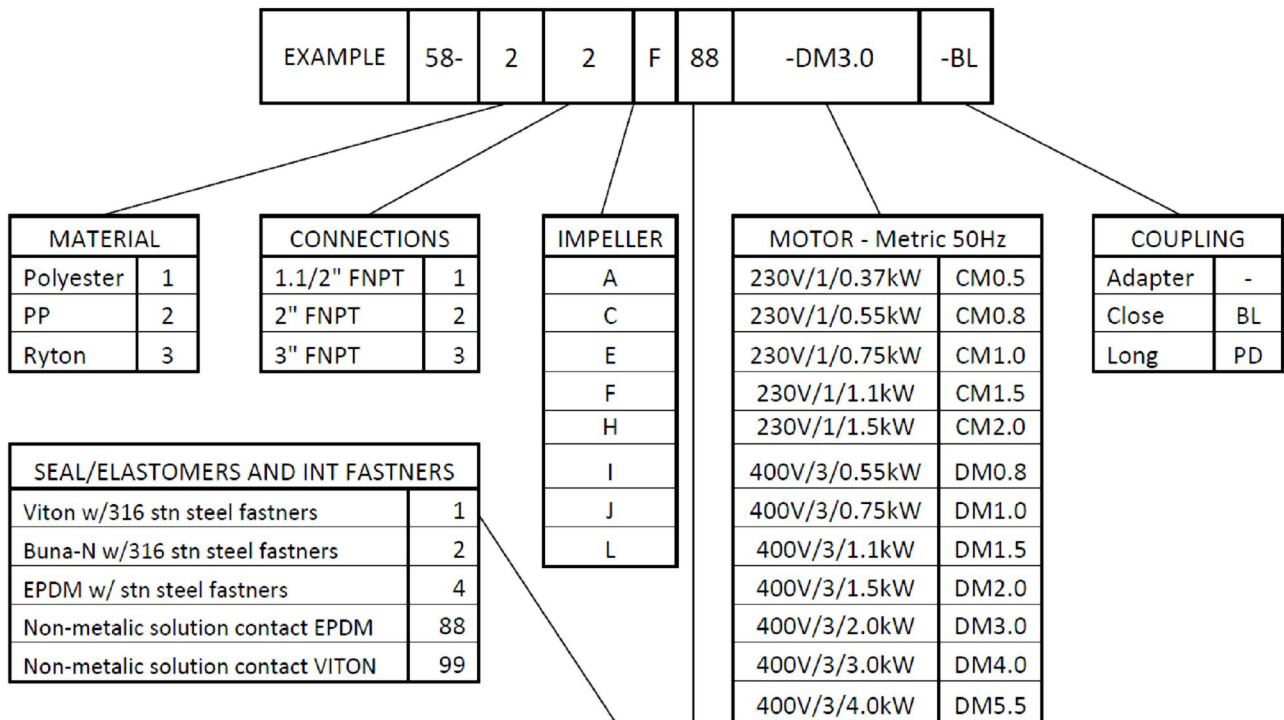
Pump moulded of glass reinforced polyester with 316 stainless steel internal fasteners, 304 SS external fasteners, EPDM "O" rings and gasket, check valve, closed coupled electric motor.

CURVE		MAX FLOW M ³ /Hr	MAX PRESSURE M	POWER kW / RPM	MODEL NUMBER	SHIP WEIGHT Kg
A	1½"	9.5	4.4	0.37/1450	58-14A2 DM0.5 BL	15
C	1½"	13	5.6	0.55/1450	58-14C2 DM0.8 BL	18
E	2"	21	13	0.75/2850	58-15E2 DM1.0 BL	21
F	2"	28	22	1.5/2850	58-15F2 DM2.0 BL	28
H	2"	29	17	1.5/2850	58-15H2 DM2.0 BL	28
I	2"	42	24	3.0/2850	58-15I2 DM4.0 BL	32
J	2"	35	17	2.2/2850	58-15J2 DM3.0 BL	32
L	3"	47	17	3.0/2850	58-16L2 DM4.0 BL	32

MODEL NUMBER KEY

To determine pump-motor for a selected M³/HR and/or TDH first select the appropriate impeller from curve on the previous page. Use Table I to identify the port size for a given flow curve.

Multiply kW required shown in Standard Table by specific gravity to determine motor size. Select pump materials. Then construct Model and Price Code Numbers.



- For BSP threads on Polyester models change 1 to 4, 2 to 5, 3 to 6
- Polypropylene pump includes Ryton Volute

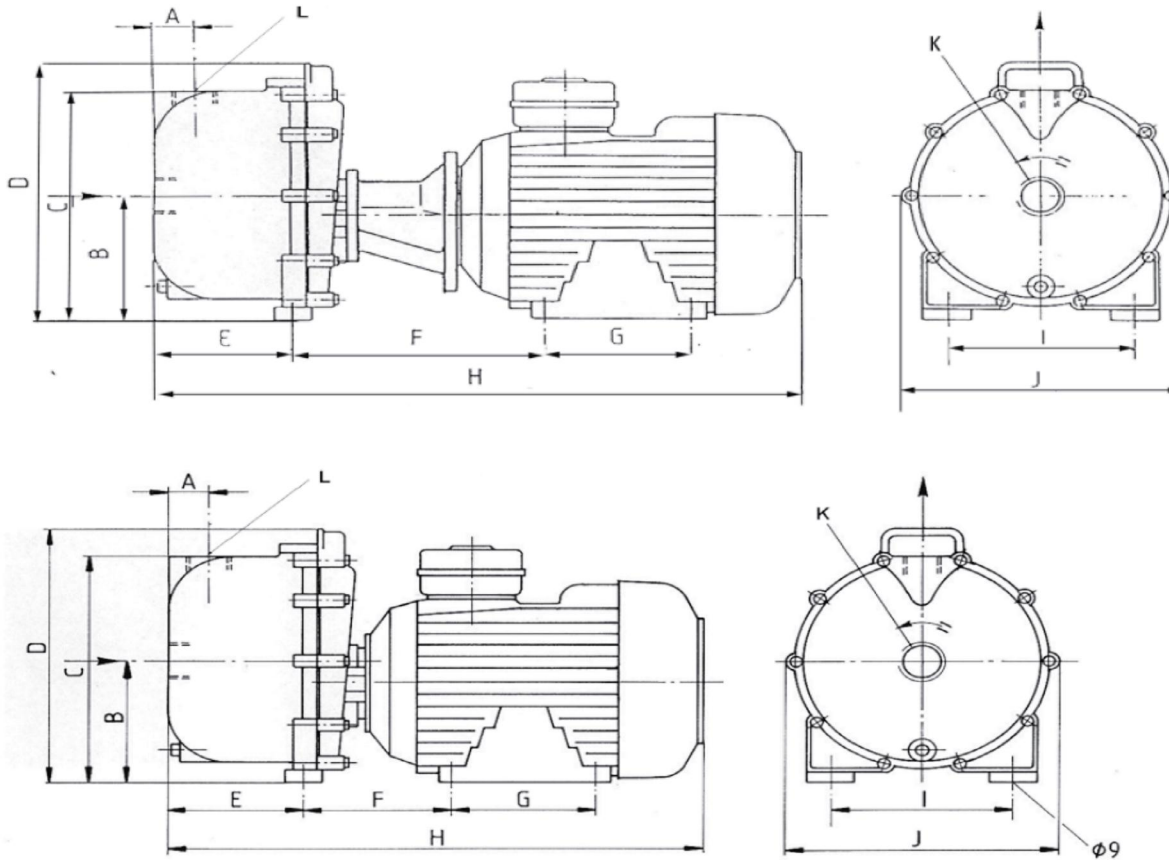


SERIES İSØDimensions

BULLETIN

P630B-INT

July 2010



Pumps with Motor Shaft Adapter MM												
PORT	A	B	C	D	E	F	G	H	I	J	K	L
1½"	40	135	255	295	145	220	125	560	186	280	F 1½"	F 1½"
2	40	135	255	295	145	220	145	560	186	280	F 2"	F 2"
3	55	135	255	295	210	220	140	670	186	280	F 3"	F 3"
CLOSE COUPLED MM												
PORT	A	B	C	D	E	F	G	H	I	J	K	L
1½"	40	135	255	295	145	125	125	452	186	280	F 1½"	F 1½"
2	40	135	255	295	145	125	125	452	186	280	F 2"	F 2"
3	55	135	255	295	210	155	140	596	186	280	F 3"	F 3"



SERFILCO® INTERNATIONAL

Unit 4b Broadoak Industrial Park
 Ashburton Road West, Trafford Park
 Manchester M17 1RW UK

Tel: +44 161 872 1317
 Fax: +44 161 873 8027
 Web: www.serfilco-international.com